

Demographic Profile of Woking Borough based on 2011 Census

Prepared by:

Riëtte Thomas
Stakeholder Engagement
Corporate Strategy

Date:

March 2013



Contents

	Page
1. Introduction	2
2. Profile of Population in Surrey	3
3. Population change from 2001 to 2011	4
4. Population and households	5
4.1 Living arrangements.....	6
4.2 Accommodation type.....	6
4.3 Tenure.....	7
4.4 Occupancy rate.....	7
4.5 Car availability per household.....	7
5. Age Profile	8
6. Gender Profile	9
7. Health Profile	9
8. Religion Profile	9
9. Highest level of education	10
10. Ethnicity Profile	11
10.1 Language spoken	12
10.2 Country of birth.....	12
10.3 Passport held.....	12
11. Profile of wards in Woking	13
11.1 Number of people	13
11.2 Number of households	14
11.3 Net increase in dwellings	14
11.4 Average household size	15
11.5 Density by ward	15
12. Super Output Areas	16
13. Economic Profile	18
13.1 Economic Activity	19
13.2 Annual survey of weekly earnings	19
13.3 Hours worked	20
13.4 Employment in industry	20
13.5 Employment by occupation	21
13.6 Method of travel to work	21
14. Conclusion	21

1. Introduction

The purpose of this report is to provide a summary of the key statistics of the 2011 Census for Woking. It gives a general picture of Surrey's population and detailed information for Woking and its wards, in separate ward profiles in pdf format. The information has been extracted from Surrey-i, www.surreyi.gov.uk, Surrey's information hub for statistical information.

The figures presented in this report are the estimated total population based on the actual census count and data from the Census Coverage Survey. The overall response rate for Surrey was 95%.

The Office for National Statistics has undertaken a rigorous quality assurance process on these estimates using a range of administrative data to validate them. Further information about the 2011 Census and data tables can be found at www.ons.gov.uk

The information in this report can be used for the following;

- inform and assist in strategic policy decision making
- supporting information for key projects
- supporting information for stakeholder engagement/ consultation and citizens panel
- promoting Woking Borough
- information for new ward councillors/ members and staff
- identifying investment opportunities and relocation advise
- Supporting funding/ grant applications
- Best value in Service delivery /targeted delivery

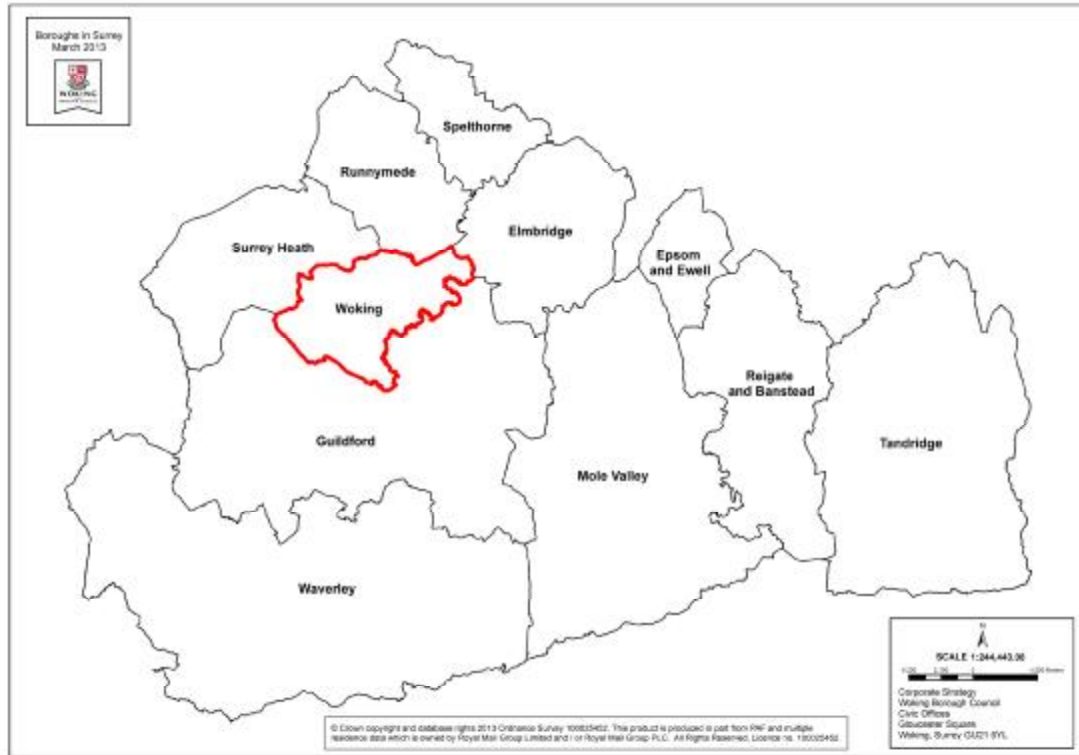
Please note that there are separate detailed ward profiles which can be downloaded from www.woking.gov.uk

At the end of this report a table for Super Output areas for population only is included, but if information is required in more detail for a specific super output area please contact Corporate Strategy.

**For more specific information or queries on this report, please contact
Stakeholder Engagement in Corporate Strategy at
stakeholderengagement@woking.gov.uk**

2. Profile of Population in Surrey

Below is a map of Surrey and the 11 boroughs within the county.



Headlines for Surrey

- Surrey's population is 1,132,390.
- Recent increase in birth rate is reflected in an increased number of under 5s, who now make up a greater proportion of the population than 10 years ago.
- Older people aged over 65 also make up a greater proportion of the population than 10 years ago.

3. Population change from 2001 to 2011

Area	2011 Census	2001 Census	change	% change
England	53,012,456	49,138,831	3,873,625	7.9
South East	8,634,750	8,000,645	634,105	7.9
Surrey	1,132,390	1,059,000	73,400	6.9
Woking	99,198	89,840	9,358	10.4
Elmbridge	130,900	121,900	9,000	7.4
Epsom and Ewell	75,100	67,100	8,000	11.9
Guildford	137,200	129,700	7,500	5.8
Mole Valley	85,400	80,300	5,100	6.4
Reigate and Banstead	137,800	126,500	11,300	8.9
Runnymede	80,500	78,000	2,500	3.2
Spelthorne	95,600	90,400	5,200	5.8
Surrey Heath	86,200	80,300	5,900	7.3
Tandridge	83,000	79,300	3,700	4.7
Waverley	121,600	115,700	5,900	5.1

- The usually resident population of Surrey, counted by the 2011 Census was 1,132,390. This is an increase of 73,400 (6.9%) since 2001.
- The fastest growing borough is Epsom and Ewell which has seen a 11.9% increase in population since 2001, while Runnymede has seen the lowest increase of 3.2%.
- **Woking** has seen a **10.4%** increase in population since 2001, which is higher than Surrey, the South East and England, which make sit one of the fastest growing boroughs in the country.

4. People and Households

The table below reflects;

- the number of people
- number of households and
- size of households

Boroughs in Surrey County Council	Persons Count 2001	Persons Count in 2011	% Of Surrey	Household Count 2001	Household Count 2011	House hold size 2001	House hold size 2011
England	49,138,831	53,012,456		20,451,427	22,063,368		
South East	8,000,645	8,634,750		3,287,489	3,555,463		
Surrey	1,059,015	1,132,390	100	433,176	455,791	2.38	2.43
Woking	89840	99198	8.8	36941	39467	2.49	2.49
Elmbridge	121936	130875	11.6	50621	52922	2.38	2.45
Epsom and Ewell	67059	75102	6.6	27362	29784	2.41	2.48
Guildford	129701	137183	12.1	52350	53973	2.37	2.42
Mole Valley	80287	85375	7.5	33623	35828	2.35	2.35
Reigate and Banstead	126523	137835	12.2	51694	55423	2.38	2.42
Runnymede	78033	80510	7.1	31656	32714	2.34	2.36
Spelthorne	90390	95598	8.4	38392	39512	2.34	2.4
Surrey Heath	80314	86144	7.6	31721	33546	2.48	2.52
Tandridge	79267	82998	7.3	31640	33342	2.44	2.43
Waverley	115665	121572	10.7	47176	49280	2.38	2.38

- Population is growing faster than the **number of households** and average household size has increased, reversing the long established trend. The total number of households in Surrey, counted by the 2011 Census was 455,791. This is an increase of 22,600 (5.2%) since 2001.
- **Woking** has seen an increase of 2526 households (6.8%) since 2001; however the average household size has stayed the same.
- In contrast to the trend over recent censuses of a decreasing **household size**, the average household size in Surrey has increased from 2.38 in 2001 to 2.43 in 2011. For more detail on density, see page 20.

4.1 Living Arrangements

	England	South East	Surrey	Woking
% living in a couple	57.80	61.00	63.30	63.30
% married couple	45.70	48.90	52.30	52.00
% cohabiting (opposite sex) couple	11.20	11.30	10.30	10.50
% same-sex civil partnership or cohabiting	0.90	0.90	0.70	0.80
% not living in a couple	42.20	39.00	36.70	36.70
% Single	25.80	23.10	21.80	22.20
% Not living in a couple: Married or in a civil partnership	1.50	1.20	1.30	1.80
% Separated	2.10	2.00	1.70	1.80
% Divorced or formerly in a same-sex civil partnership	6.50	6.50	5.80	5.50
% Widowed or surviving partner from a same-sex civil partnership	6.30	6.20	6.00	5.40

Nearly two thirds of people in Woking are living as a couple with only 22% being single.

4.2 Accommodation Type

	Surrey	South East	Woking
All households	455791	3555463	39467
% Whole house or bungalow: Total	78.50	78.82	75.80
Detached	33.15	28.20	31.54
Semi-detached	29.53	28.07	24.57
Terraced (including end-terrace)	15.82	22.55	19.68
% Flat maisonette or apartment: Total	20.58	20.27	23.78
Purpose-built block of flats or tenement	17.02	15.79	20.75
Part of a converted or shared house (including bedsits)	2.49	3.53	2.08
In commercial building	1.06	0.96	0.95
Caravan or other mobile or temporary structure	0.78	0.61	0.31
% Shared dwelling	0.14	0.30	0.11

Three quarters of households in Woking live in a detached, semi or terraced house, with the rest in flats or maisonettes or apartment blocks and less than one percent in a caravan or mobile structure.

4.3 Tenure

	Surrey	South East	Woking
All households	455791	3555463	39467
% Owned: Total	72.88	67.63	70.51
Owned outright	34.82	32.52	31.62
Owned with a mortgage or loan	38.06	35.11	38.89
% Shared ownership (part owned and part rented)	1.02	1.10	0.93
% Social rented: Total	11.43	13.71	11.92
Rented from council	4.95	5.81	8.38
Other social rented	6.48	7.90	3.54
% Private rented: Total	13.47	16.27	15.67
Landlord or letting agency	12.17	14.67	14.56
Employer of a household member	0.42	0.44	0.27
Relative or friend of household member	0.63	0.84	0.65
Other	0.26	0.32	0.20
% Living rent free	1.20	1.28	0.96

Seven out of ten people own their own home. About 11.92% is social housing and a further 15.67% is privately rented.

4.4 Occupancy Rate

	England	Surrey	South East	Woking
All households	22063368	455791	3555463	39467
% Occupancy rating (rooms) of 0	18.61	16.36	17.69	18.81
% with occupancy rating of -1 or less	8.74	6.75	7.48	8.92
% Occupancy rating (rooms) of +1	22.92	19.82	21.51	20.37
% Occupancy rating (rooms) of +2 or more	49.72	57.06	53.32	51.89

4.5 Car availability per household

	England	Surrey	South East	Woking
All households	22063368	455791	3555463	39467
% with no cars or vans	25.80	13.13	18.58	15.16
% with one car or van	42.16	40.42	41.74	41.24
% with 2 cars or vans	24.66	34.21	29.80	32.99
% with 3 cars or vans	5.46	8.69	7.13	7.61
% with 4 or more cars or vans	1.93	3.54	2.76	3.01
Average cars per household	1.16	1.51	1.35	1.43

The majority (74.23%) of households have one or two cars.

5. Age Profile by 5 year age group

Region	% of Pop	Surrey			Woking		
		2011 Census	2001 Census	% change	2011 Census	2001 Census	% change
All ages		1,132,400	1,059,000	6.90	99198	89849	10.41
Age 0-4	6.3	71,300	62,800	13.50	7278	5677	28.20
Age 5-9	5.8	65,800	65,600	0.30	6003	6036	-0.55
Age 10-14	6.0	67,600	65,300	3.50	5578	5693	-2.02
Age 15-19	6.0	67,700	59,800	13.20	5320	5007	6.25
Age 20-24	5.4	61,500	56,400	9.00	4961	4677	6.07
Age 25-29	5.5	62,200	64,200	-3.10	6812	6397	6.49
Age 30-34	6.3	71,900	79,700	-9.80	7803	7572	3.05
Age 35-39	7.2	81,000	88,500	-8.50	8103	7868	2.99
Age 40-44	7.7	87,700	78,900	11.20	7687	6718	14.42
Age 45-49	7.9	89,700	71,500	25.50	7418	6069	22.23
Age 50-54	6.8	76,600	78,700	-2.70	6494	6203	4.69
Age 55-59	5.8	65,600	64,000	2.50	5443	4893	11.24
Age 60-64	6.1	69,400	51,400	35.00	5455	3936	38.59
Age 65-69	4.8	54,300	46,600	16.50	4090	3640	12.36
Age 70-74	3.9	43,600	41,400	5.30	3290	3154	4.31
Age 75-79	3.3	37,700	35,400	6.50	2883	2744	5.07
Age 80-84	2.6	28,900	24,900	16.10	2254	1795	25.57
Age 85-89	1.7	19,100	15,700	21.70	1527	1134	34.66
Age 90+	1.0	10,900	8,200	32.90	799	636	25.63

- The largest 5 year cohort is aged 45-49 with a population of 89,700. This reflects the baby boom of the early 1960s.
- The fastest growing cohort since 2001 is the 60-64 age group which has increased by 35%. This reflects the post war baby boom.
- The population aged 0-4 has increased by 13.5% since 2001. This age group makes up 6.3% of the population, up from 5.9% in 2001. The population aged 0-4 in Woking has increased by 28.1%.
- The population aged over 65 has increased by 13% since 2001. This age group makes up 17.2% of the population, up from 16.3% in 2001. The population aged over 65 in **Woking** has increased by 13.7%.
- The population aged over 85 has increased by 25.5% since 2001. This age group makes up 2.7% of the population, up from 2.3% in 2001. The population aged over 85 in **Woking** has increased by 27.8%.

6. Gender profile

	Population by sex - Males	Population by sex - % male	Population by sex - Females	Population by sex - % female
England	26,069,148	49.18	26,943,308	50.82
South East	4,239,298	49.10	4,395,452	50.90
Surrey	554665	48.98	577725	51.02
Woking	49144	49.54	50054	50.46

In Woking 49.54% of the population is male and 50.46% female.

7. Health Profile

People with day to day activities limited by long term illness or disability (ranked by %)	Long term illness or disability - All with day-to-day activities limited	Long term illness or disability - % with day-to-day activities limited
England	9,352,586	17.64
South East	1,356,204	15.71
Surrey	153354	13.54
Woking	12885	12.99

General Health - % in bad or very bad health		
England	2,250,446	4.25
South East	291,456	3.38
Surrey	30599	2.7
Woking	2602	2.62

People in Woking are generally in good health.

8. Religion Profile

	England %	South East %	Surrey %	Woking %
Christian	59.38	59.76	62.8	58.82
Buddhist	0.45	0.51	0.53	0.68
Hindu	1.52	1.07	1.33	1.97
Muslim	5.02	2.34	2.15	7.38
Jewish	0.49	0.21	0.27	0.22
Sikh	0.79	0.64	0.33	0.15
Other religion	0.43	0.46	0.37	0.34
No religion	24.74	27.66	24.8	23.12
Religion not stated	7.18	7.36	7.42	7.33

The percentage of Christians is lower than the average for Surrey and the percentage of Muslims in Woking is significantly higher than the average for the county.

9. Highest level of education

	England %	South East %	Surrey %	Woking %
No qualifications	22.5	19.1	15.9	15.2
Level 1 qualification	13.3	13.5	12.2	12
Level 2 qualifications	15.2	15.9	15.3	14.3
Level 3 qualifications	12.4	12.8	12.3	11.3
Level 4 qualifications and above	27.4	29.9	36.2	38.4
Other qualifications	5.7	5.2	5.1	6.3

No Qualifications: No academic or professional qualifications

Level 1 qualifications: 1-4 O Levels/CSE/GCSEs (any grades), Entry Level, Foundation Diploma, NVQ level 1, Foundation GNVQ, Basic/Essential Skills

Level 2 qualifications: 5+ O Level (Passes)/CSEs (Grade 1)/GCSEs (Grades A*-C), School Certificate, 1 A Level/ 2-3 AS Levels/VCEs, Intermediate/Higher Diploma, Welsh Baccalaureate Intermediate Diploma, NVQ level 2, Intermediate GNVQ, City and Guilds Craft, BTEC First/General Diploma, RSA Diploma Apprenticeship

Level 3 qualifications: 2+ A Levels/VCEs, 4+ AS Levels, Higher School Certificate, Progression/Advanced Diploma, Welsh Baccalaureate Advanced Diploma, NVQ Level 3; Advanced GNVQ, City and Guilds Advanced Craft, ONC, OND, BTEC National, RSA Advanced Diploma

Level 4+ qualifications: Degree (for example BA, BSc), Higher Degree (for example MA, PhD, PGCE), NVQ Level 4-5, HNC, HND, RSA Higher Diploma, BTEC Higher level, Foundation degree (NI), Professional qualifications (for example teaching, nursing, accountancy)

Other qualifications: Vocational/Work-related Qualifications, Foreign Qualifications (Not stated/ level unknown).

10. Ethnicity Profile

	England %	South East %	Surrey %	Woking %
White: British	79.75	85.23	83.51	74.94
White: Irish	0.98	0.85	1.15	1.1
White: Gypsy or Irish Traveller	0.10	0.17	0.2	0.15
White: Other White	4.58	4.41	5.54	7.41
White and Black Caribbean	0.78	0.53	0.43	0.41
White and Black African	0.30	0.26	0.24	0.3
White and Asian	0.63	0.68	0.85	0.98
Other Mixed	0.53	0.47	0.55	0.66
Indian	2.63	1.76	1.79	2.35
Pakistani	2.10	1.15	0.96	5.73
Bangladeshi	0.82	0.32	0.3	0.45
Chinese	0.72	0.61	0.84	0.88
Other Asian	1.55	1.39	1.73	2.15
African	1.84	1.01	0.69	1.02
Caribbean	1.11	0.40	0.29	0.27
Other Black	0.52	0.17	0.11	0.1
Arab	0.42	0.22	0.36	0.55
Any other ethnic group	0.62	0.37	0.45	0.55

Over the last decade Surrey became more ethnically diverse. Caution is needed when comparing census ethnic data over the years due to changes and increases in tick boxes and changes to how the question was worded (change from cultural to ethnic background).

While White continued to be the majority ethnic group people identify with, it decreased over the last decade.

Woking is the most diverse borough in the county with the highest proportion of Pakistani's in the county.

- 83.6% White
- 2.35% Mixed Background
- 10.68% Asian
- 0.88% Chinese
- 1.39% Black or Black British
- 1.1% Other Ethnic Group

10.1 Language spoken

	Surrey	South East	Woking
Main language is English	1024981	7832436	85179
% Main language is English	94.05	94.21	89.89
% main language not English	5.95	5.79	10.11
% speak English very well	3.16	2.69	4.90
% speak English well	2.11	2.17	3.64
% speak English not well	0.59	0.79	1.33
% cannot speak English	0.09	0.14	0.24

Language spoken in Woking is reflective of its cultural diversity. Of the 10% whose main language is not English, 8.5% speak it well or very well, with only less than 1% not being able to speak English at all.

10.2 Country of birth

	Surrey %	South East %	Woking %
Born in England	82.52	84.84	76.84
Born in UK	85.79	87.92	80.12
Born in Scotland	1.66	1.56	1.75
Born in Wales	1.15	1.10	1.06
born in Republic of Ireland	0.88	0.68	0.87
Born in Northern Ireland	0.44	0.41	0.46
Born in EU	4.75	4.37	6.21
Born in other EU: Member countries in March 2001	2.36	1.88	3.30
Born in other EU: Accession countries April 2001 to March 2011	1.51	1.81	2.04
Born in Other Countries	9.46	7.71	13.67

The majority (80.12%) of people living in Woking were born in the UK.

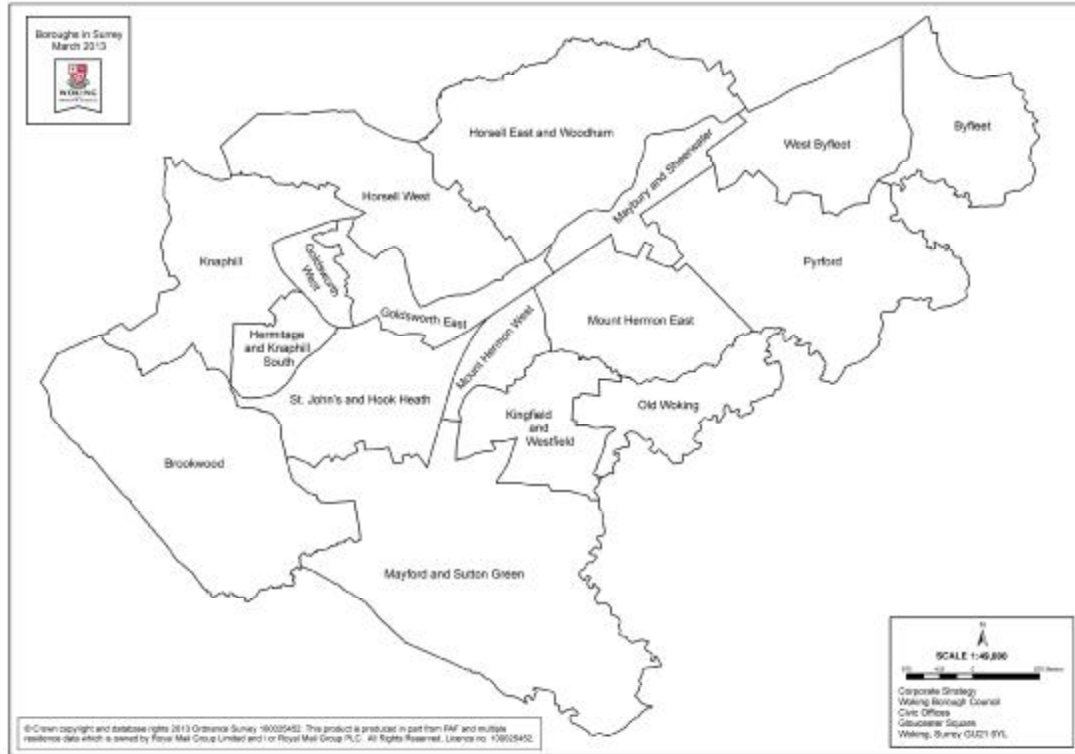
10.3 Passport held

	Surrey %	South East %	Woking %
United Kingdom	82.27	79.05	78.87
All non UK	10.22	8.17	14.45
No passport	9.65	14.12	9.29
Other Europe: EU countries	3.67	3.29	5.55
Other Europe: Non EU countries	0.38	0.26	0.47
Republic of Ireland	1.00	0.71	0.97
South America	0.18	0.11	0.25
Central America	0.03	0.02	0.02
North America and the Caribbean	1.00	0.65	0.93
Middle East and Asia	2.05	1.79	3.78
Africa	1.19	0.89	1.81
Antarctica and Oceania	0.71	0.45	0.67

Interesting that nearly 10% of people living in Woking do not have a valid passport.

11. Profile of wards in Woking Borough

For more detail on each ward, see separate Ward Profiles in pdf format on the Woking website.



11.1 Number of people

	2001	2011	% change
Brookwood	2416	2565	6.17
Byfleet	6995	7724	10.42
Goldsworth East	7325	7970	8.81
Goldsworth West	5297	5135	-3.06
Hermitage & Knaphill South	5193	5330	2.64
Horsell East & Woodham	4326	4789	10.70
Horsell West	6839	7348	7.44
Kingfield & Westfield	5211	5576	7.00
Knaphill	8635	9958	15.32
Maybury & Sheerwater	8974	10574	17.83
Mayford & Sutton Green	2369	2470	4.26
Mount Hermon East	4621	5211	12.77
Mount Hermon West	4487	6052	34.88
Old Woking	2644	3192	20.73
Pyrford	5076	5022	-1.06
St Johns & Hook Heath	4378	4656	6.35
West Byfleet	5054	5626	11.32
Total	89840	99198	10.42

11.2 Number of households

	2001	2011	% Change
Brookwood	931	960	3.11
Byfleet	2973	3174	6.76
Goldsworth East	3221	3420	6.18
Goldsworth West	2144	2082	-2.89
Hermitage & Knaphill South	2231	2227	-0.18
Horsell East & Woodham	1655	1827	10.39
Horsell West	2776	2838	2.23
Kingfield & Westfield	2095	2119	1.15
Knaphill	3429	3849	12.25
Maybury & Sheerwater	3334	3618	8.52
Mayford & Sutton Green	928	973	4.85
Mount Hermon East	1841	2006	8.96
Mount Hermon West	2424	2945	21.49
Old Woking	1046	1236	18.16
Pyrford	1965	1985	1.02
St Johns & Hook Heath	1836	1888	2.83
West Byfleet	2111	2320	9.90
Total	36941	39467	6.84

According to information from the planning department the following information in terms of the increase in newly built houses can explain the increase in population and increase in households.

11.3 Net Increase in Dwellings between 2001 – 2011

Brookwood	40
Byfleet	265
Goldsworth East	346
Horsell East & Woodham	191
Hermitage & Knaphill South	47
Horsell West	89
Knaphill	318
Kingfield & Westfield	65
Maybury & Sheerwater	332
Mount Hermon East	244
Mount Hermon West	570
Mayford & Sutton Green	65
Old Woking	222
Pyrford	29
St Johns & Hook Heath	88
West Byfleet	192

Mount Herman West showed a net dwelling increase of **570 units** over the 10 year period which resulted in an increase in population by nearly 34.88% and an increase in the number of households by 21.49%.

Goldsworth East showed a net dwelling increase of **346 units** over the 10 year period which resulted in a population increase of 8.88% and a 6.18% increase in households.

Maybury and Sheerwater showed a net dwelling increase of **332 units** over the 10 year period which resulted in a population increase of 17.83% and a 8.52% increase in households.

Knaphill showed a net dwelling increase of **318 units** over the 10 year period which resulted in a population increase of 15.32% and a 12.25% increase in households.

11.4 Average Household size

	2001	2011
Brookwood	3	2.65
Byfleet	2	2.41
Goldsworth East	2	2.33
Goldsworth West	2	2.46
Hermitage & Knaphill South	2	2.39
Horsell East & Woodham	3	2.56
Horsell West	2	2.56
Kingfield & Westfield	2	2.6
Knaphill	3	2.57
Maybury & Sheerwater	3	2.92
Mayford & Sutton Green	3	2.54
Mount Hermon East	2	2.51
Mount Hermon West	2	2.05
Old Woking	3	2.58
Pyrford	3	2.5
St Johns & Hook Heath	2	2.41
West Byfleet	2	2.41
Total	2	2.49

11.5 Density in Woking by ward

	Population	Area (hectares)	Population density (persons per hectare)
Brookwood	2565	739	3.50
Byfleet	7724	285	27.10
Goldsworth East	7970	179	44.50
Goldsworth West	5135	79	65.00
Hermitage and Knaphill South	5330	114	46.80
Horsell East and Woodham	4789	664	7.20
Horsell West	7348	447	16.40
Kingfield and Westfield	5576	246	22.70
Knaphill	9958	429	23.20
Maybury and Sheerwater	10574	171	61.80
Mayford and Sutton Green	2470	1022	2.40
Mount Hermon East	5211	336	15.50
Mount Hermon West	6052	110	55.00
Old Woking	3192	224	14.30
Pyrford	5022	615	8.20
St Johns and Hook Heath	4656	346	13.50
West Byfleet	5626	351	16.00
Woking	99198	6357	15.60

The wards with the highest density in Woking are;

- Goldsworth West (65 persons per hectare)
- Maybury and Sheerwater (61.80)
- Mount Hermon West (55)
- Hermitage and Knaphill South (46.80)
- Goldsworth East (44.50)

12. Super output Areas

LSOA CODE	LSOA name	Ward code	WARD *	Pop 2011	% change since 2001	Number of households
E01030944	Woking 012A	43UMFS	Brookwood	1397	8.9	497
E01030945	Woking 012B	43UMFS	Brookwood	1168	3.0	463
E01030946	Woking 001A	43UMFT	Byfleet	1337	6.7	607
E01030947	Woking 001B	43UMFT	Byfleet	1480	8.1	532
E01030948	Woking 001C	43UMFT	Byfleet	1577	9.7	620
E01030949	Woking 001D	43UMFT	Byfleet	1732	19.7	705
E01030950	Woking 001E	43UMFT	Byfleet	1598	7.4	710
E01030951	Woking 005A	43UMFU	Goldsworth East	1320	-5.8	611
E01030952	Woking 005B	43UMFU	Goldsworth East	1561	1.6	602
E01030953	Woking 005C	43UMFU	Goldsworth East	1472	1.9	650
E01030954	Woking 008A	43UMFU	Goldsworth East	2223	43.5	979
E01030955	Woking 010A	43UMFU	Goldsworth East	1394	0.0	578
E01030956	Woking 005D	43UMFW	Goldsworth West	1331	-5.5	509
E01030957	Woking 005E	43UMFW	Goldsworth West	1319	-0.8	493
E01030958	Woking 005F	43UMFW	Goldsworth West	1459	-3.8	609
E01030959	Woking 005G	43UMFW	Goldsworth West	1026	-1.6	471
E01030960	Woking 009A	43UMFX	Hermitage and Knaphill South	1721	3.1	742
E01030961	Woking 009B	43UMFX	Hermitage and Knaphill South	1927	0.7	717
E01030962	Woking 009C	43UMFX	Hermitage and Knaphill South	1682	4.4	768
E01030963	Woking 003A	43UMFY	Horsell East and Woodham	1550	11.3	530
E01030964	Woking 003B	43UMFY	Horsell East and Woodham	1772	17.4	741
E01030965	Woking 003C	43UMFY	Horsell East and Woodham	1467	3.0	556
E01030966	Woking 003D	43UMFZ	Horsell West	1481	5.9	507
E01030967	Woking 003E	43UMFZ	Horsell West	1641	16.0	631
E01030968	Woking 003F	43UMFZ	Horsell West	1293	3.9	533
E01030969	Woking 008B	43UMFZ	Horsell West	1457	5.7	539
E01030970	Woking 008C	43UMFZ	Horsell West	1476	5.2	628
E01030971	Woking 011A	43UMGA	Kingfield and Westfield	1930	4.8	737
E01030972	Woking 011B	43UMGA	Kingfield and Westfield	1876	8.1	688
E01030973	Woking 011C	43UMGA	Kingfield and Westfield	1770	8.3	694
E01030974	Woking 007A	43UMGB	Knaphill	1556	4.5	629
E01030975	Woking 007B	43UMGB	Knaphill	1415	1.2	554
E01030976	Woking 007C	43UMGB	Knaphill	1538	2.6	631

E01030977	Woking 007D	43UMGB	Knaphill	1780	18.4	693
E01030978	Woking 012C	43UMGB	Knaphill	1506	5.5	510
E01030979	Woking 007E	43UMGB	Knaphill	2163	64.1	832
E01030980	Woking 004A	43UMGC	Maybury and Sheerwater	1706	25.5	556
E01030981	Woking 004B	43UMGC	Maybury and Sheerwater	1647	10.8	464
E01030982	Woking 004C	43UMGC	Maybury and Sheerwater	1836	9.8	596
E01030983	Woking 004D	43UMGC	Maybury and Sheerwater	1782	43.9	681
E01030984	Woking 004E	43UMGC	Maybury and Sheerwater	2038	15.5	694
E01030985	Woking 004F	43UMGC	Maybury and Sheerwater	1565	7.6	627
E01030986	Woking 012D	43UMGD	Mayford and Sutton Green	1074	4.4	449
E01030987	Woking 012E	43UMGD	Mayford and Sutton Green	1396	4.2	524
E01030988	Woking 006A	43UMGE	Mount Hermon East	2004	21.0	821
E01030989	Woking 006B	43UMGE	Mount Hermon East	1721	13.1	604
E01030990	Woking 006C	43UMGE	Mount Hermon East	1486	3.0	581
E01030991	Woking 008D	43UMGF	Mount Hermon West	1927	28.6	1031
E01030992	Woking 010B	43UMGF	Mount Hermon West	1674	11.8	698
E01030993	Woking 008E	43UMGF	Mount Hermon West	2451	64.4	1216
E01030994	Woking 011D	43UMGG	Old Woking	1806	38.1	687
E01030995	Woking 011E	43UMGG	Old Woking	1386	3.7	549
E01030996	Woking 002A	43UMGH	Pyrford	1600	-1.8	577
E01030997	Woking 006D	43UMGH	Pyrford	1524	2.5	690
E01030998	Woking 002B	43UMGH	Pyrford	1898	-3.1	718
E01030999	Woking 010C	43UMGJ	St John`s and Hook Heath	1433	2.4	495
E01031000	Woking 009D	43UMGJ	St John`s and Hook Heath	1536	7.2	655
E01031001	Woking 010D	43UMGJ	St John`s and Hook Heath	1687	9.1	738
E01031002	Woking 002C	43UMGK	West Byfleet	1755	5.8	678
E01031003	Woking 002D	43UMGK	West Byfleet	1791	4.9	648
E01031004	Woking 002E	43UMGK	West Byfleet	2080	23.2	994

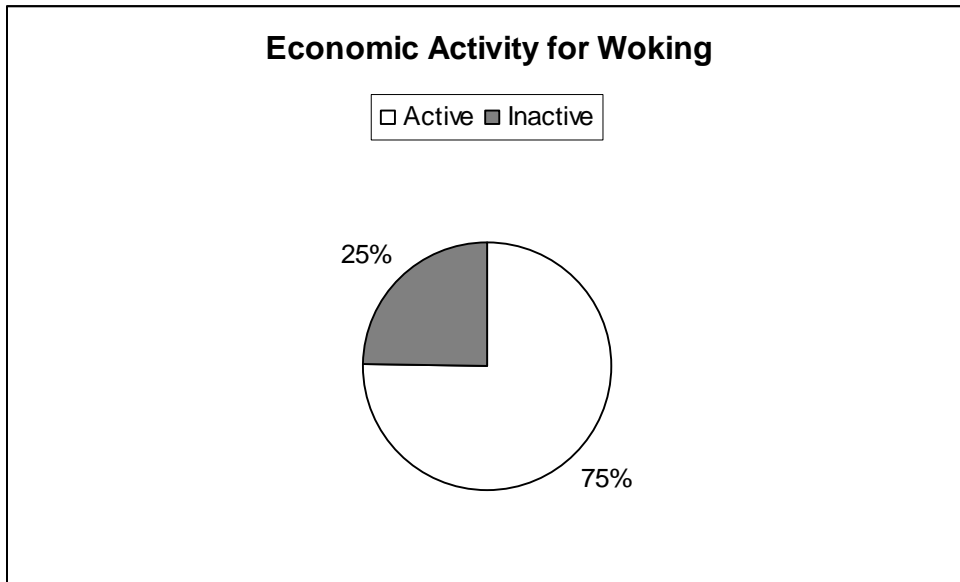
* Ward boundaries are revised from time to time, but the LSOA boundaries will only be revised if they become too small or too large (when they will be split in 2 or combined with a neighbouring LSOA) this means that over time; LSOAs will not fit in wards. This table shows the "best fit" of LSOAs to current wards. In Surrey the only change to wards since 2001 was a revision of the boundary between Betchingley & Nutfield and Burstow, Horne & Outwood in Tandridge. LSOAs affected by the change are indicated by *

13. Economic Profile of Surrey and Woking

13.1 Economically Active population

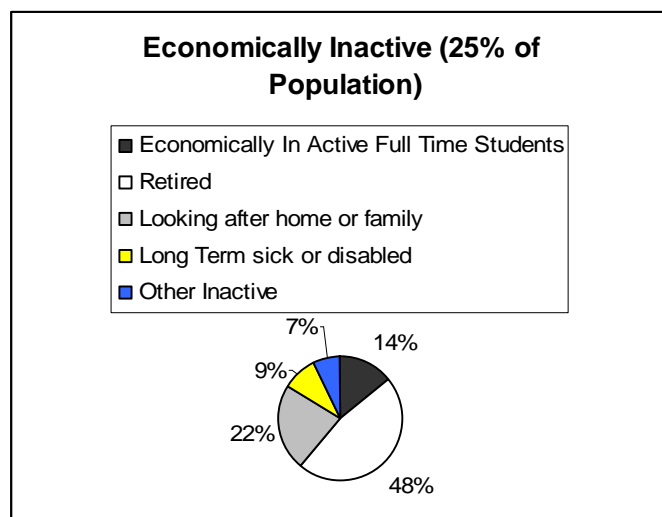
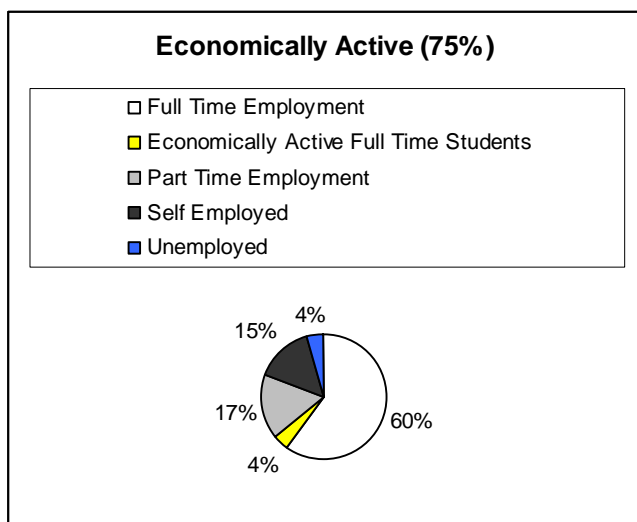
2011 Census % of population aged 16-74 who are economically active	Economic Activity - Females - % economically active	Economic Activity - Males - % economically active	Economic Activity - Persons - % economically active
England	64.73	75.18	69.91
South East	66.67	77.55	72.06
Surrey (County)	67.67	79.75	73.63
Woking	68.4	82.29	75.36
Spelthorne	70.44	80.59	75.47
Reigate and Banstead	69.9	80.67	75.24
Surrey Heath	69.62	80.63	75.15
Epsom and Ewell	67.87	79.55	73.55
Tandridge	67.9	79.33	73.49
Elmbridge	65.85	81.36	73.37
Mole Valley	66.77	78.73	72.67
Guildford	66.57	77.76	72.17
Waverley	65.56	78.69	72.01
Runnymede	66.16	77.27	71.61

Woking has been ranked second in the county as the borough with the highest percentage of people being economically active (75.36%) and Woking also has the highest percentage of males being economically active. (82.29%)



Woking Census 2011: Population 16-74	Economic Activity - Females - % economically active	Economic Activity - Males - % economically active	Economic Activity - Persons - % economically active
Economically Active	68.4	82.29	75.36
Full Time Employment	35.44	54.68	45.09
Economically Active Full Time Students	3.1	2.93	3.02
Part Time Employment	20.09	4.98	12.52
Self Employed	7.07	15.95	11.52
Unemployed	2.7	3.74	3.22
Economically Inactive	31.6	17.71	24.64
Economically In Active Full Time Students	3.44	3.69	3.57
Retired	13.2	9.79	11.49
Looking after home or family	10.52	0.53	5.51
Long Term sick or disabled	2.26	2.27	2.27
Other Inactive	2.17	1.42	1.8

Note that percentages shown here are based on the total population aged 16-74 whereas published unemployment rates measure unemployment as a percentage of the economically active population.



13.2 Annual Survey of weekly earnings - 2012

	England	Surrey	South East	Woking
Full Time Workers	£512.70	£650.50	£555.80	£584.10
Part Time Workers	£155.30	£172.90	£161.00	£148.00

People in Woking (both Woking full time and part time) earn about 10% less than the average for Surrey.

13.3 Hours worked

	England	Surrey	South East	Woking
All people in employment	25162721	574526	4260723	51341
% Part-time: Total	29.04	27.30	28.60	25.53
% Part-time: 15 hours or less worked	9.61	10.41	10.27	9.50
% Part-time: 16 to 30 hours worked	19.43	16.89	18.33	16.03
% Full-time: Total	70.96	72.70	71.40	74.47
% Full-time: 31 to 48 hours worked	57.64	56.02	56.77	58.63
% Full-time: 49 or more hours worked	13.32	16.68	14.63	15.84

Of those who work full time, nearly 60% work 31 to 48 hours and of the quarter who work part-time, 16% work between 16 to 30 hours.

13.4 Employment by Industry

The table below shows the percentage of the resident population in each standard employment sector for all 16-74 year olds. These particular figures do not indicate where people work and should not be used to infer the employment sectors in individual boroughs.

	England %	Surrey %	South East %	Woking %
Agriculture forestry and fishing	0.81	0.32	0.67	0.18
Mining and quarrying	0.17	0.31	0.14	0.37
Manufacturing	8.85	5.23	7.19	5.92
Electricity gas steam and air conditioning supply	0.56	0.43	0.58	0.35
Water supply sewerage waste management and remediation activities	0.70	0.52	0.70	0.53
Construction	7.68	7.46	7.97	6.38
Wholesale and retail trade; repair of motor vehicles and motor cycles	15.93	13.86	15.56	14.79
Transport and storage	5.01	5.82	5.23	5.43
Accommodation and food service activities	5.56	4.26	5.03	4.07
Information and communication	4.07	7.00	5.52	8.21
Financial and insurance activities	4.39	6.11	4.50	5.78
Real estate activities	1.46	1.69	1.43	1.34
Professional scientific and technical activities	6.70	10.13	7.46	10.73
Administrative and support service activities	4.93	5.51	5.16	5.72
Public administration and defence; compulsory social security	5.90	5.34	6.00	5.29
Education	9.90	9.75	10.14	8.22
Human health and social work activities	12.40	10.56	11.62	10.36
Arts entertainment and recreation; other service activities	4.79	5.43	4.90	6.01
Activities of households as employers; undifferentiated goods - and services - producing activities of households f	0.12	0.23	0.15	0.23
Activities of extraterritorial organisations and bodies	0.08	0.06	0.05	0.08

13.5 Employment by Occupation

	England %	Surrey %	South East %	Woking %
Managers directors and senior officials	10.87	14.60	12.25	13.40
Professional occupations	17.49	21.69	18.73	22.92
Associate professional and technical occupations	12.79	15.69	13.83	14.98
Administrative and secretarial occupations	11.46	12.01	11.46	11.71
Skilled trades occupations	11.36	9.67	11.11	8.95
Caring leisure and other service occupations	9.33	8.57	9.32	8.46
Sales and customer service occupations	8.42	6.47	7.89	7.32
Process plant and machine operatives	7.19	4.12	5.70	4.78
Elementary occupations	11.10	7.18	9.70	7.49

The above table reflects Woking's highly skilled work-force.

13.6 Method of travel to work

	Surrey %	South East %	Woking %
Working at home	7.70	6.56	6.62
Driving a car or van	59.26	60.80	57.79
Passenger in a car or van	3.49	4.70	3.76
Train	13.55	7.32	15.90
Underground metro light rail tram	0.61	0.36	0.40
Taxi	0.30	0.39	0.36
On foot	8.61	10.88	8.90
Bicycle	2.23	3.00	2.67
Bus minibus or coach	2.67	4.46	2.33
Motorcycle scooter or moped	0.95	0.86	0.77
Other method	0.63	0.66	0.52

The majority of people, **57.79%**, in Woking travel to work by car (lower than Surrey and the South East), 15.9% by train and 8.9% walking. This reflects a population who is adapting a "greener" approach to travelling to work.

14. Conclusion

The information in this report can make a difference in so many projects and decisions made within the Council. The Census 2011 gives us up to date information about the growth in the borough over the last 10 years and prepare us for the future.

Please do not hesitate to contact the Stakeholder Engagement team if you need specific information for a project or grant application.